



KSSE

Katowice
Special
Economic Zone

Supporting innovation & entrepreneurship – mechanisms offered by Katowice Special Economic Zone

Bielsko-Biała November 22, 2022

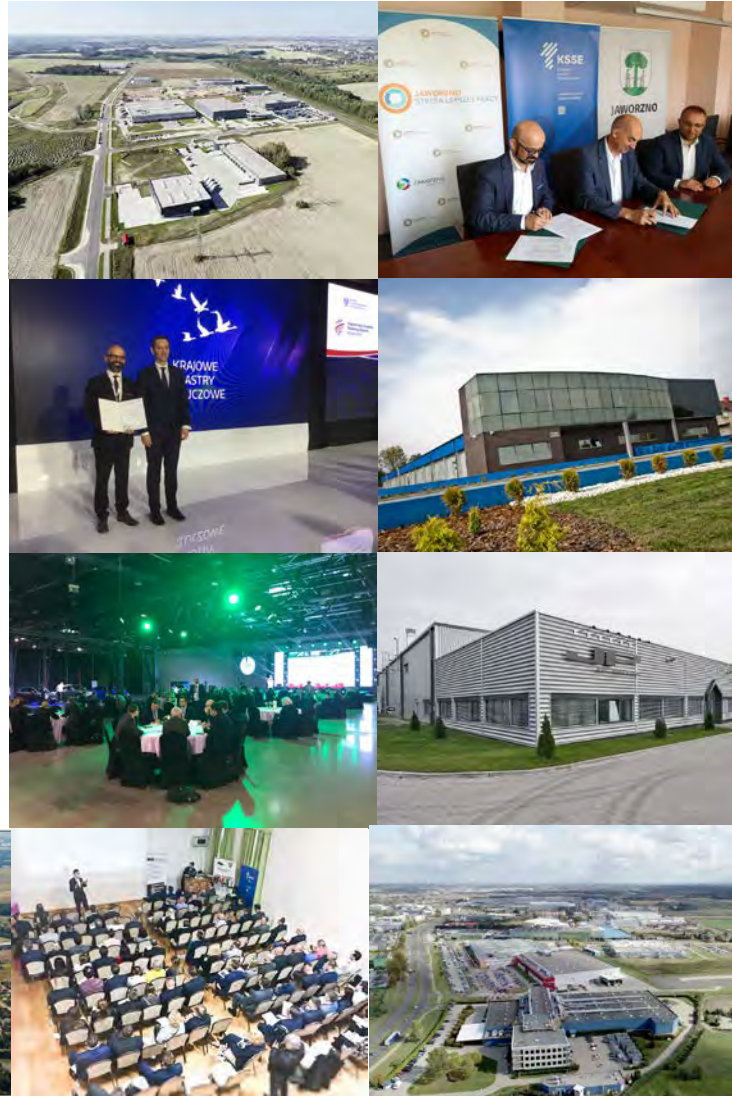
Piotr Sikora, Chief Business Development Specialist

What is special economic zone? Polish Investment's Zone

- Governmental instrument of supporting **industrial activity**, creating of new jobs and regional development
- There are 14 special economic zones in Poland
- Opportunity of guaranteed **tax relief** with Corporate Income Tax for running business activity within the zone

Katowice Special Economic Zone

- Company owned by state treasury and 10 municipalities
- Operating since 1996 at the south of Poland – in Silesia and Opole Voivodship (regions)



GOALS & ROLES

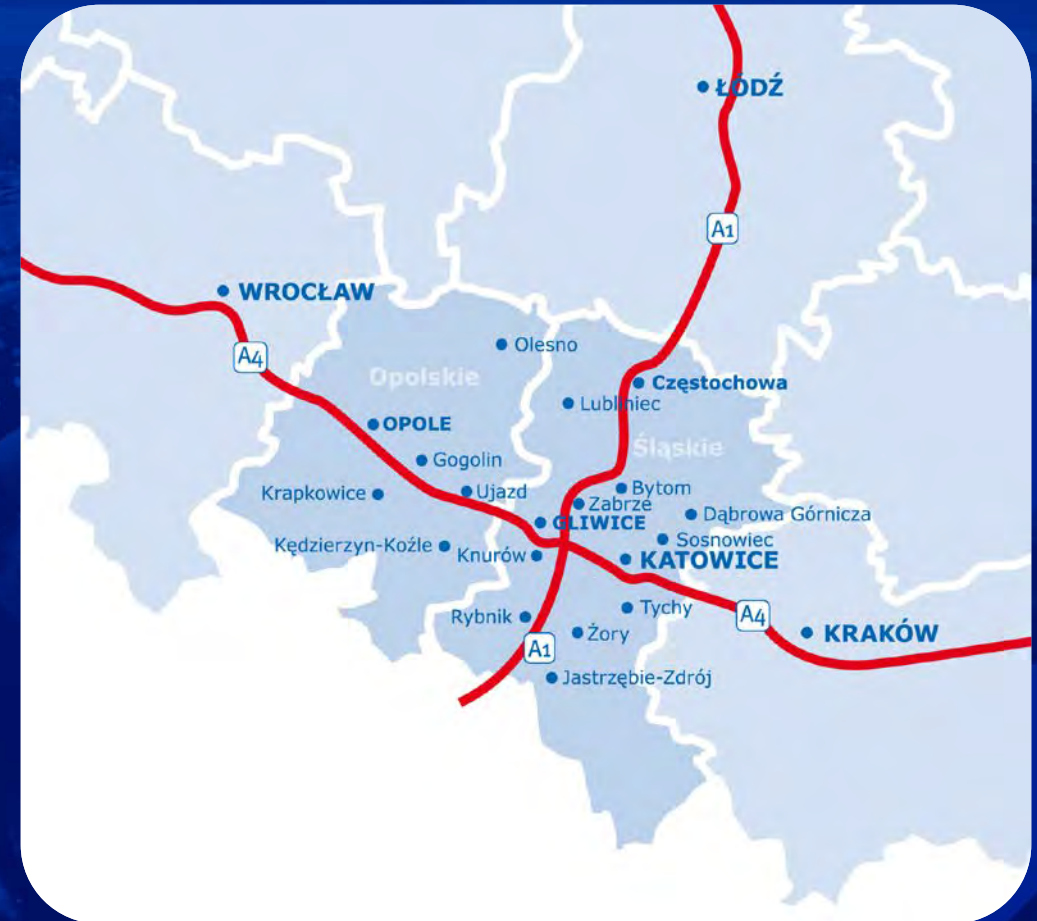
- Looking for new investors (industrial, logistic, R&D, BPO)
- Selling investment plots, equipped areas
 - Various sizes of plots (starting of c. 0,3 ha)
- Granting „**Decisions on support**” for conducting business activity
- Supporting the vocational education system (e.g. dual studies basing on the cooperation of investors)
- Linking the business (business mixers, international economical missions, conferences, etc.

AND MANY OTHERS!

STRATEGIC LOCATION

Main advantages:

- location in the heart of Europe
- the best road, rail and air communication
- large educational center
- highly qualified workforce



KSEZ AREA

The Katowice Special Economic Zone covers the area of the Silesia Region and the eastern part of the Opolskie Region.

SILESIA REGION

For many years now, Silesia has been the most attractive region in Poland in terms of investment. It is also the largest industrial region in Poland, where, in addition to traditional industrial sectors, the automotive, service and high-tech sectors play important roles.

The region has the best-developed transport infrastructure in Poland, which includes a very well-developed road and rail network.

WROCLAW

OPOLE

KEDZIERZYN-KOZLE

RACIBORZ

8,5 mln

CZESTOCHOWA

4,8 mln

2,5 mln

KATOWICE

KRAKOW

BIELSKO-BIALA



Area

12,294 km²



Working-age population

2.6 million



Population

4.5 million



Number of national economy entities

434,900



Unemployment rate

3.6%



Number of universities and colleges

30

No. 1 in Europe

ACCORDING TO FINANCIAL TIMES



KSEZ in figures

90 000

WORK PLACES



9.7 bln EUR

INVESTMENTS



540

COMPANIES

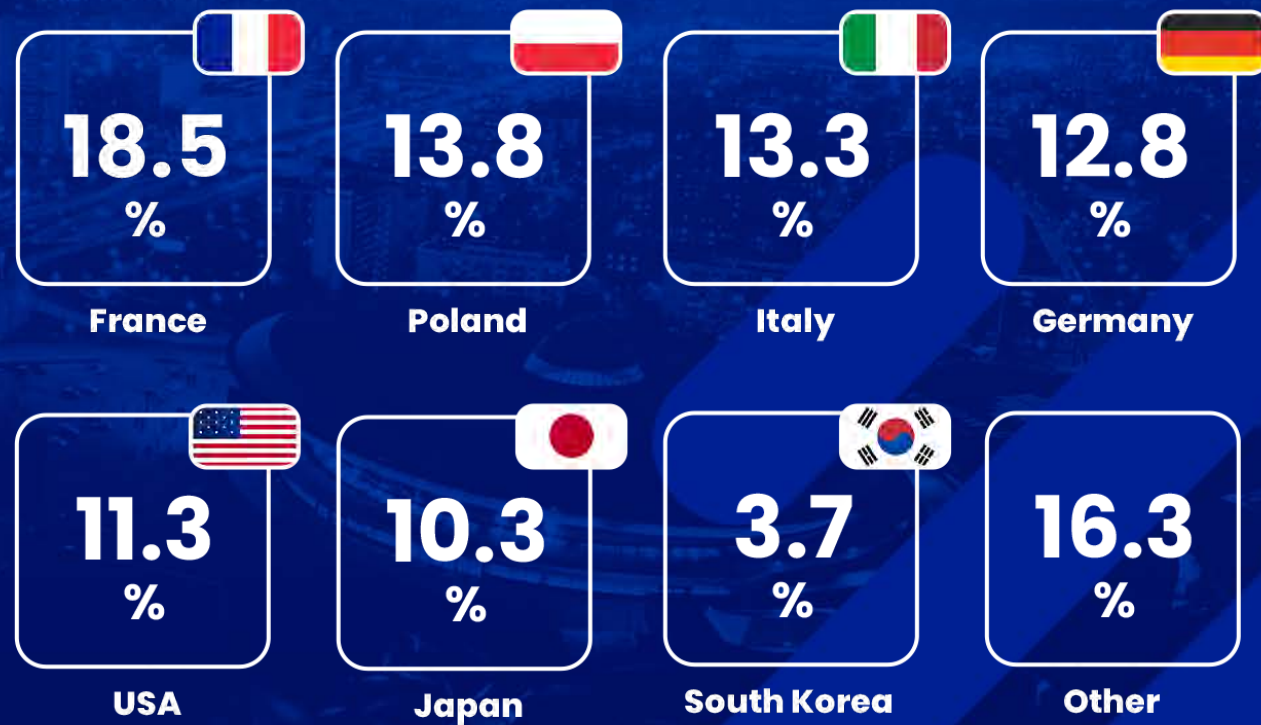
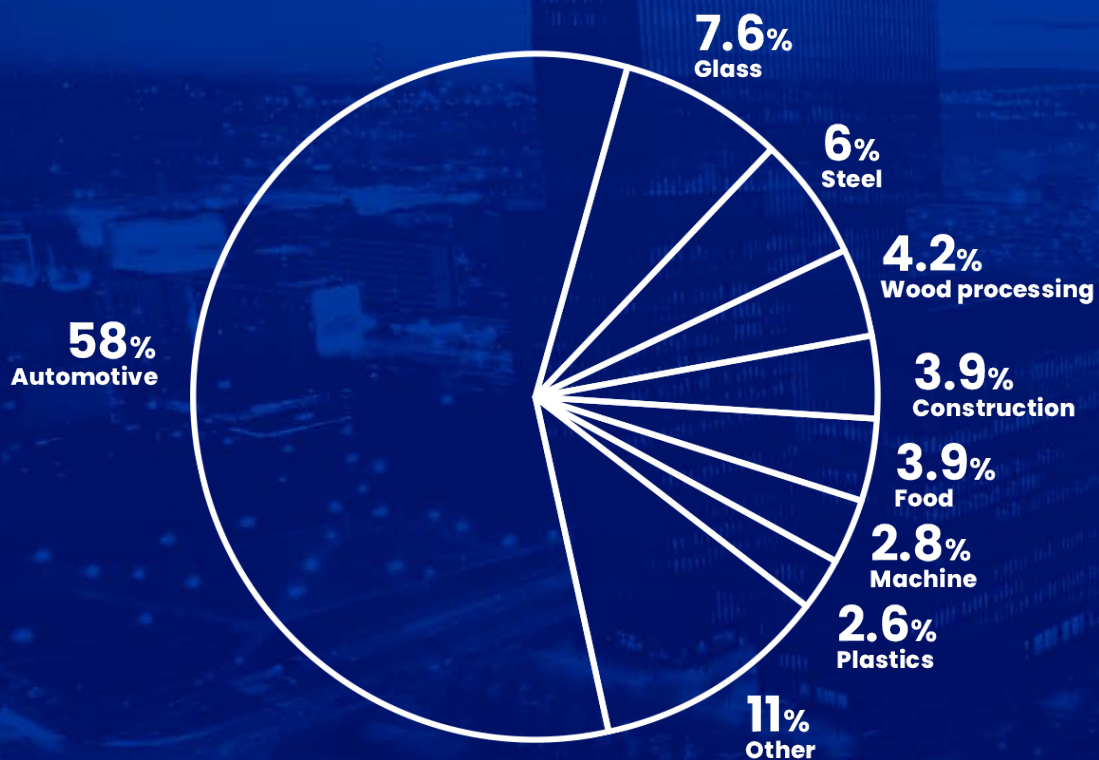


+800

INVESTMENT
PROJECTS



Investment sources & main sectors:



KSEZ – THE DRIVING FORCE OF AUTOMOTIVE INDUSTRY:

- **OPEL Manufacturing Poland**
(electric delivery vans, engines)
- **FCA Poland – 5 plants**
(ia. hybrid and electric cars, engines)
- **SK Innovation investments – 4 plants**
(lithium-ion batteries separators)
- **Planned investment in Jaworzno of EMP**
(first Polish electric car from 2024)





The incentive - income tax exemption

- the income tax relief is regional investment aid in favor of a new investment
- to benefit from the incentive it is necessary to receive decision on support issued by KSSE Co.
- decision on support for the offered site can be issued for a period of 12-15 years

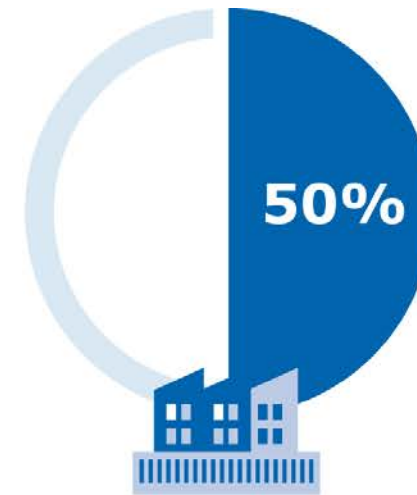
Calculation of tax exemption in Silesia



BIG ENTERPRISES



MEDIUM ENTERPRISES



SMALL ENTERPRISES

**Corporate Income
Tax relief**

=

aid intensity

×

investment costs

or

**Corporate Income
Tax relief**

=

aid intensity

×

2-year labour costs

Calculating the tax relief amount in Silesia region :

30 % LARGE SIZED ENTERPRISES

40 % MEDIUM SIZED ENTERPRISES

50 % SMALL SIZED ENTERPRISES

QUALIFIED INVESTMENT COSTS

Net cost of purchase of fixed assets such as:

- LAND *
- PRODUCTION HALL*
- MACHINERY

* Or when operating in leased premises:
COSTS RELATED TO LEASE, PROVIDING THE
LEASE CONTINUES FOR MINIMUM 5 YEARS

OR

TWO-YEAR EMPLOYMENT COSTS

Gross salaries plus social security charges
related to new jobs for a period of 2 years

for example: large-sized company, investment costs of 4,000,000 EUR
MAXIMUM PUBLIC AID AMOUNT = 30% x 4,000,000 EUR = 1,200,000 EUR
TO BE USED IN THE FORM OF CIT EXEMPTION

Zory / Pawlowice investment area



Gliwice investment area



Tychy investment area



Dąbrowa Górnicza investment area



KSEZ

The Katowice Special Economic Zone has been operating in Poland since 1996.

The KSEZ creates preferential conditions for investment by offering tax incentives, prepared and developed investment areas and support in the investment process.

Since 2018, the Katowice Special Economic Zone has been providing support within the Polish Investment Zone (Polska Strefa Inwestycji).



#1 in Europe

in 2015–2017, 2019 and 2021, according to the Financial Times



#2 globally

in 2015 and 2019, according to the Financial Times



Silesia Automotive and Advanced Manufacturing

- **SA&AM Cluster is a Key National Cluster - certified by the Ministry of Entrepreneurship and Technology**

(certificate issued to clusters of significant strategic importance for the Polish economy and high international competitiveness)

- **SA&AM Cluster is a certified European Cluster with the SILVER Level certificate by ESCA.**



KRAJOWY
KLASTER
KLUCZOWY



SA&AM cluster members

• Adient Seating Poland

- ASD Systems
- Aiut
- Akademia WSB
- Akademia Techniczno-Humanistyczna
- Aktrion Automotive Poland
- Aluron
- Amister
- Autonomous Systems
- Bielski Park Technologiczny Lotnictwa, Przedsiębiorczości i Innowacji
- Bitron Poland
- BMZ Poland
- Bobrek Aluminium
- Boryszew Oddział Maflow w Tychach
- BOS Automotive Products Polska
- Bodycote Polska
- Brembo Poland
- Bulten Invest
- Carlex Design Rokšana Skotnicka
- Centrum Materiałów Polimerowych
- i Węglowych
- CGR Polska



• Cooper Standard Automotive

- Conbelts
- Cyberus Labs
- Data Interchange
- Dayco Poland
- DEKRA Polska
- Eaton Automotive System
- Ecotechnilin
- Electropoli Poland
- Elplast
- EMT-Systems
- ENTE
- Erae Poland
- Extral
- Exergon
- Ferros-System
- Festo
- FCA Poland
- Ficimirros Polska
- Future Processing
- Geo Globe Polska
- GST Automotive Safety Poland
- Guhring
- Hengst Filtration Poland
- Hirschvogel Components Poland
- HP Polska
- Huf Polska
- IFM Electronic
- Instytut Badań i Rozwoju Motoryzacji BOSMAL



- Instytut Ciężkiej Syntezy Organicznej "Błachownia"
- Instytut Metali Nieżelaznych
- Instytut Spawalnictwa
- Instytut Technik Innowacyjnych
- Instytut Odlewnictwa w Krakowie
- IWM Automation Polska
- EMAG
- JAC Products Poland
- Kirchoff Polska
- KLS
- Lontex
- Macro Molds Polska
- Magna Car Top Systems
- Magna Formpol
- Magneti Marelli Poland
- Mapro Poland
- Marcoll
- MCS
- Meiko Trans Polska
- Metalsolution
- Metar
- Michael Teresa Michalik
- Microplásticos Polska
- MTM CEE
- Mubea Automotive Poland
- **Nexteer Automotive Poland**
- NGK Ceramics Polska
- Nifco Korea Poland
- Omron Electronics
- Opel Manufacturing Poland



- PNT Technopark Gliwice
- Plastic Omnium Auto
- Pol-Technology
- Politechnika Śląska
- Piomar
- Rhenus SILS Centre Gliwice
- RMA
- **Rockwell Automation**
- Saint-gobain Innovative Materials Polska
- Simap Polska
- Śląskie Centrum Naukowo-Technologiczne Przemysłu Lotniczego
- Sapa Polska
- SK hi-tech battery materials Poland
- SmarT Plus
- Soning Stal
- Sekonix Poland
- **SZCZĘŚNIAK**
- **TENNECO**
- **Tenneco Automotive Eastern Europe**
- **Tenneco Silesia**
- TI Poland
- **TRU-FLEX**
- Valeo Electric and Electronic Systems
- Woobotech
- Welding Alloys Polska
- Wyższa Szkoła Techniczna-Park Naukowo Technologiczny Silesia
- Zakłady Metalowe "POSTĘP"
- ZBM Głombik
- ZF TRW Steering Systems Poland
- ZF TRW Polska
- ZF TRW Breaking Systems Polska



DEVELOPMENT PROJECTS

Silesia Automotive and Advanced Manufacturing Cluster

5 educational projects, including:

- Dual Studies at Universities
- Dual education with technical/vocational schools
- International School in Katowice

Business accelerator **KSSNON**

INTERNATIONAL COOPERATION:

Suez Canal Economic Zone, Egypt

RAKEZ Ras Al Khaimah Economic Zone, UAE

KIZAD Khalifa Port Free Trade Zone, UAE





KSSE

Katowicka
Specjalna Strefa
Ekonomiczna



Business Accelerator **KSSENON**

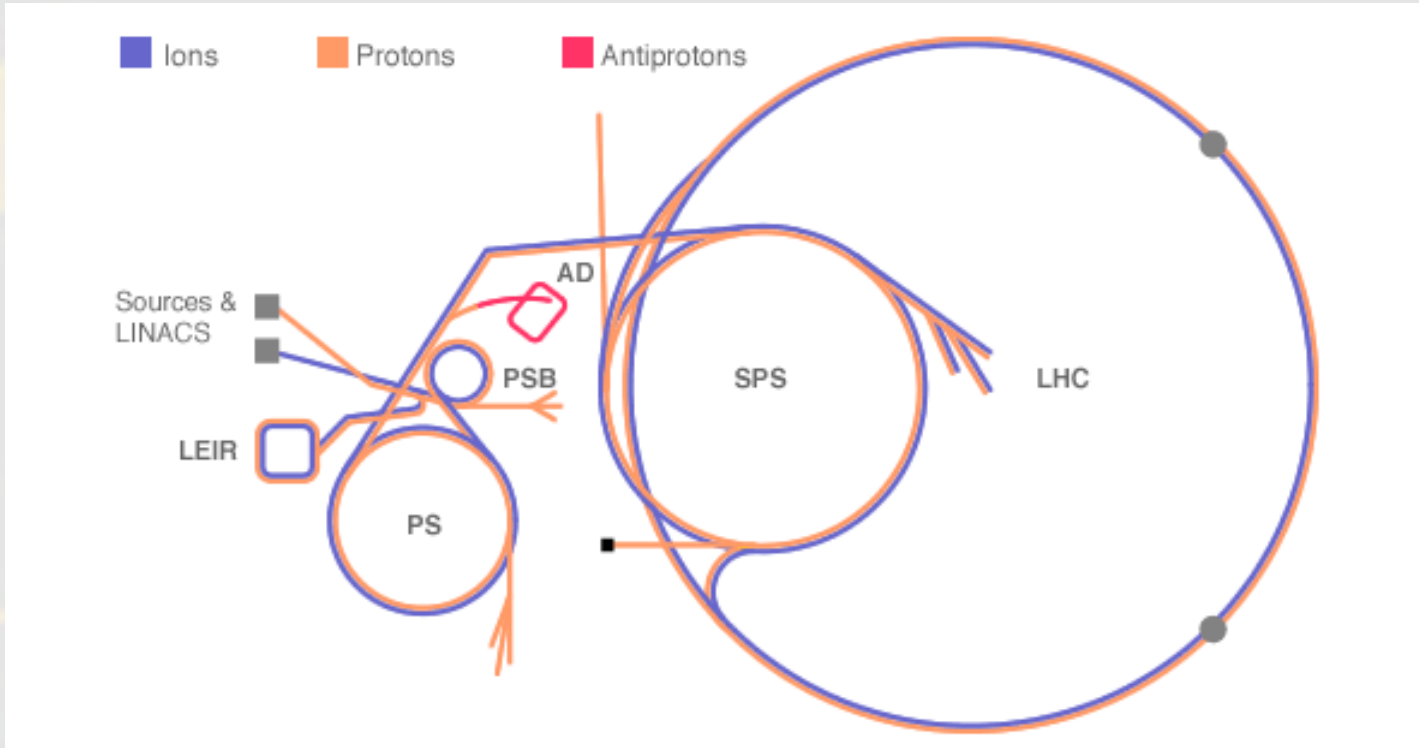
Project cofinanced by European Regional Development Fund, 2014-2020 financial perspective

Amount of EU's cofinancing: 40 885 000,00 zł / c. 8 650 000 EUR

Location: **City of Żory**

MAIN GOALS

- ❖ Development of innovation's ecosystem in Silesian Voivodeship
- ❖ Extension of KSEZ Co. offer
- ❖ SME's professionalization, increase of companies innovation level
- ❖ Integration of diffused actions and politics within business surroundings
- ❖ Networking, increasing of synergy effect of cooperation



KSSE S.A. Katowice Special Economic Zone Co., institution that supports development of business and industry



Accelerator an device for fundamental particles acceleration to velocities near speed of light in the vacuum. Particles that has electric charge are accelerated in an electromagnetic field.



Xenon the gas, used b.o. for quick achivement of the satisfactory speed's of the light stream

ACCELERATION PARK

1) Industrial part:

32 small industrial halls
 (c. 250 – 350 m² with the possibility of connecting)
for lease for micro, small and medium enterprises

PROFESSIONAL FROM SCRATCH

2) Non industrial part:

A group of infrastructure of the business surrounding
 for lease for companies, NGO's and administration

ENTREPRENEURSHIP & INNOVATION CLIMATE



The model

Lease for the companies for 5-6 years, then possibility of buying own piece of land and continuation of the development.

NOT THE BUSINESS ONLY

- ❖ **Spotlight!** What distinguish the Business Accelerator KSSENON from typical lease of hall from developers is an enrichment of the building complex by non-industrial part. That enables urban and process usage of the neighboring business and creates an synergy effect and environment for cooperation by all parts of the enterprise.
- ❖ Within the non-industrial part an area for business surrounding is planned to meet new requirements of the both business as well as NGO and public setor.
- ❖ Integration of diffused actions and policies in one place

Non industrial part

<ul style="list-style-type: none"> ❖ Qualification Centre ❖ Coworking Centre 	KSSE + municipality
<ul style="list-style-type: none"> ❖ Institutions of Business Surrounding ❖ Offices, consulting, legal ❖ Vehicle charging station ❖ Others, f.e. Labor Office 	<ul style="list-style-type: none"> ❖ Bistro ❖ Post agency ❖ Bank, ATM ❖ Nursery, Kid's Club External companies



NOT THE BUSINESS ONLY

QUALIFICATION CENTRE

- ❖ for technical school's students and other individuals that are interested in increasing own qualifications
- ❖ Vocational trainings of the machine and devices operation, (hardware and software)
- ❖ VR Simulation Part



COWORKING CENTRE

- ❖ For start-ups, new enterprises, small teams, young businesses
- ❖ The address, place of work and business meetings, for creativity and crossing ideas
- ❖ Access to infrastructure, computers, conference room, business library, office devices
- ❖ Video Content Studio (idea)



EFFECTS RESUME

- ❖ The place that connects new and growing industrial enterprises with widely understood non-industrial surrounding, that is connected with the business,
- ❖ The intensification of the cooperation of regional innovation ecosystem actor's. The optimization of conditions for innovation's creation, increasing of actions focused on commercialization of smart specialisations, increasing of local innovative actions, increasing of competences of entities that operate for the business,
- ❖ A part of cooperation's network for the development of innovative and creative economy;
- ❖ The creative space – animation of enterprises, prototyping and demonstration that will be inspiring for new ideas, specially related to regional smart specialisations,
- ❖ High potential of the multiplication and spreading the idea and case study around
- ❖ „Out of finance” effects – c. growing 50 companies (c. 30 industrial, with constant and fluent exchange in cycles of 5-6 years), c. 550 jobs within KSSENON.

ROAD MAP

2015
PROJECT
CONCEPTION

2017-2019
REALISATION OF
TECHNICAL
DOCUMENTATION

2020 - 2021
TENDER
PROCEDURES
(+ COVID)

2021-2023
CONSTRUCTION
WORKS
+
PREPARATIONS FOR
BUSINESS ACTIVITY

Q3 2023
START OF BUSINESS
ACTIVITY

CONSTRUCTION WORKS NOVEMBER 2022



THANK YOU!



**Katowicka
Specjalna Strefa
Ekonomiczna**

KATOWICE SPECIAL ECONOMIC ZONE

ul. Wojewódzka 42
40-026 Katowice
e-mail: ksse@ksse.com.pl

psikora@ksse.com.pl

tel. +48 32 43 51 613