



**2050**  
**CliMobCity**  
Interreg Europe



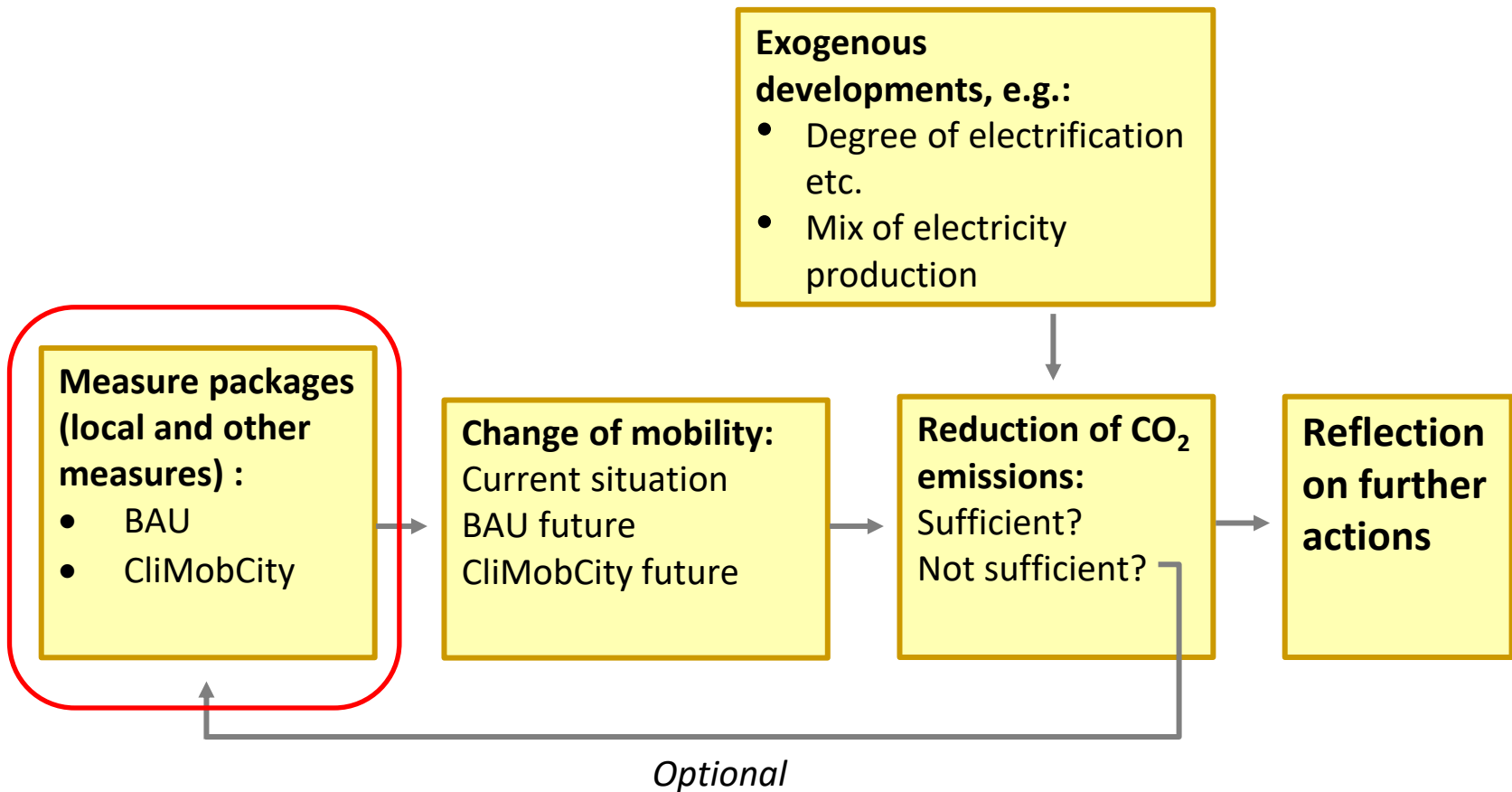
European Union  
European Regional  
Development Fund

**Cities'**  
**demonstrations.**  
**Red thread**

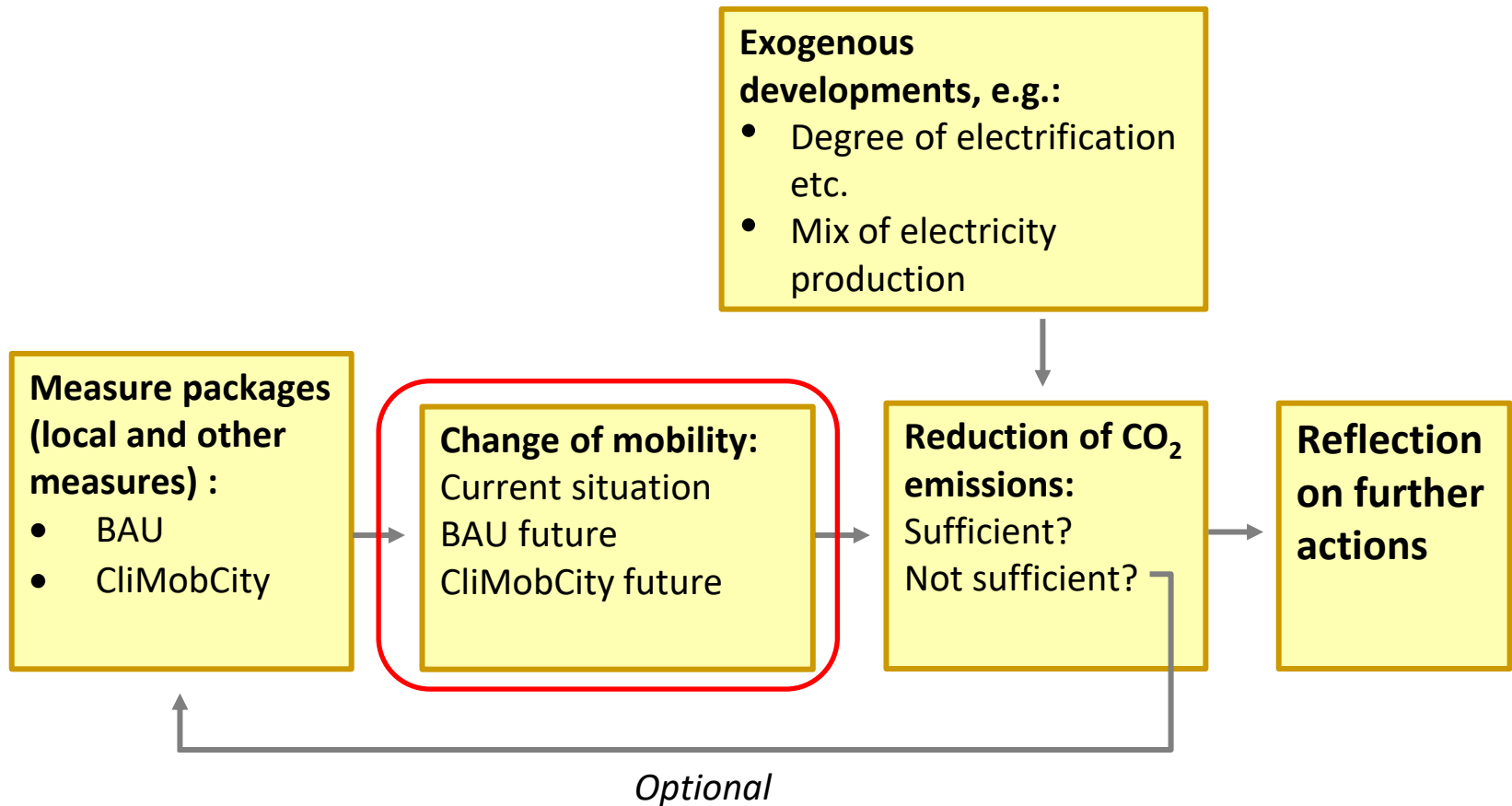
**Ekki Kreutzberger**

Final Dissemination Event  
19-21 June 2023

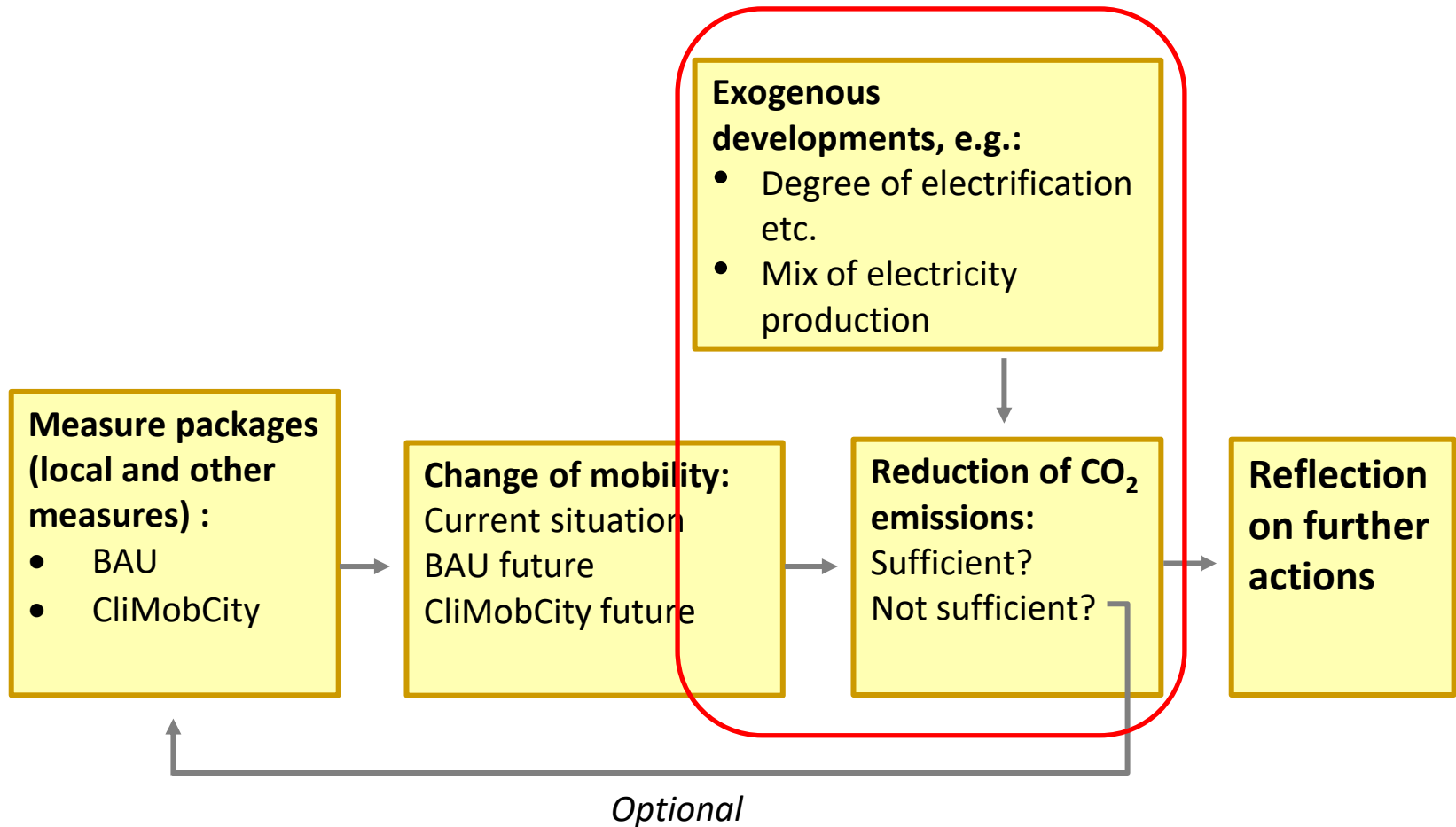
# List of contents of the project report



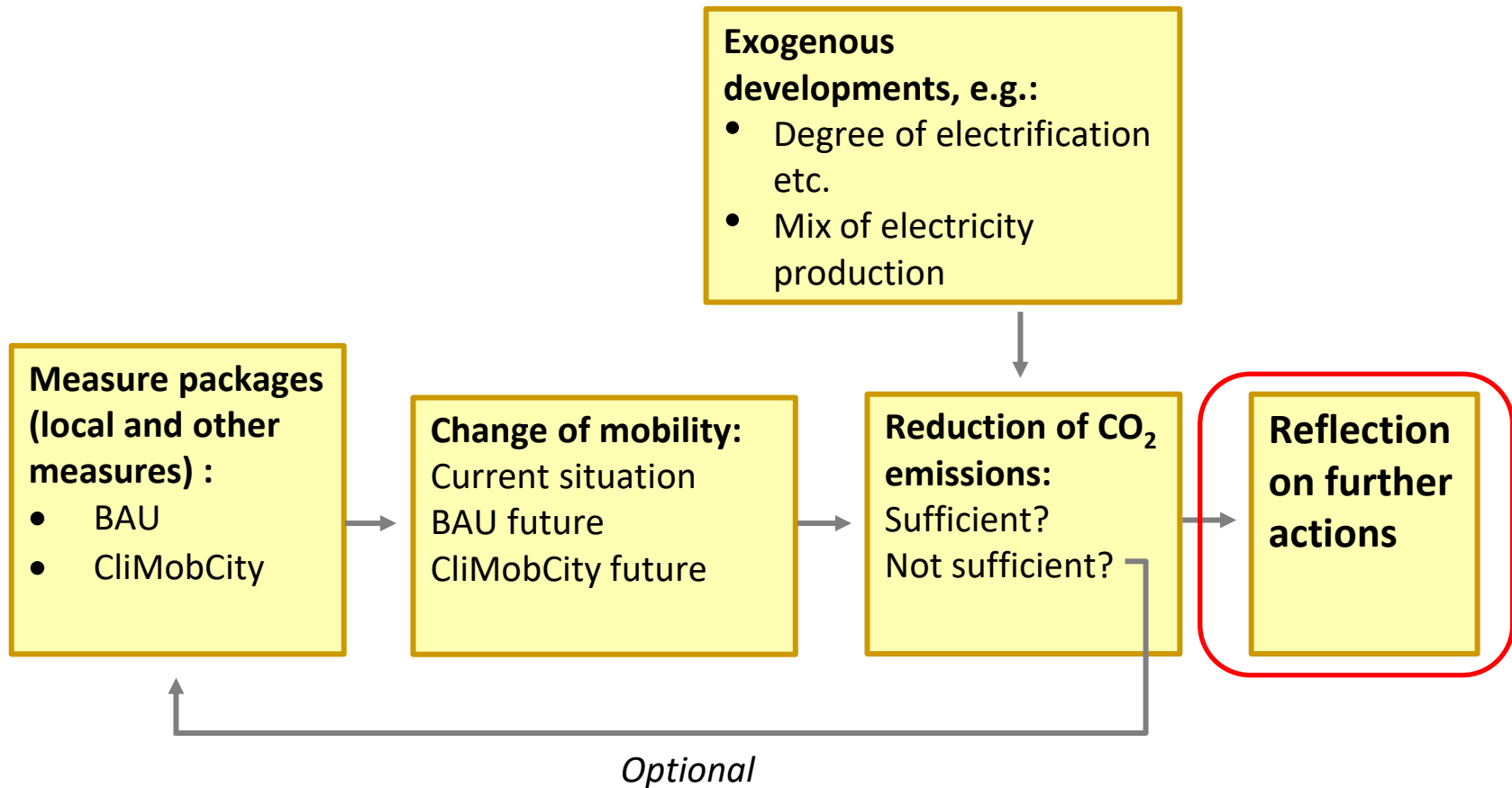
# List of contents of the project report



# List of contents of the project report



# List of contents of the project report



# Planning horizon in the project and population projections

Bydgoszcz 2021 -> 2050

348,000 -> 336,000 inhabitants.

-3.5% = -0.1% per year

Plymouth 2015 -> 2034

263,000 -> 298,000 inhabitants.

+13% = +0.7% per year

Thessaloniki 2018 -> 2030

313,000 -> 330,000 inhabitants.

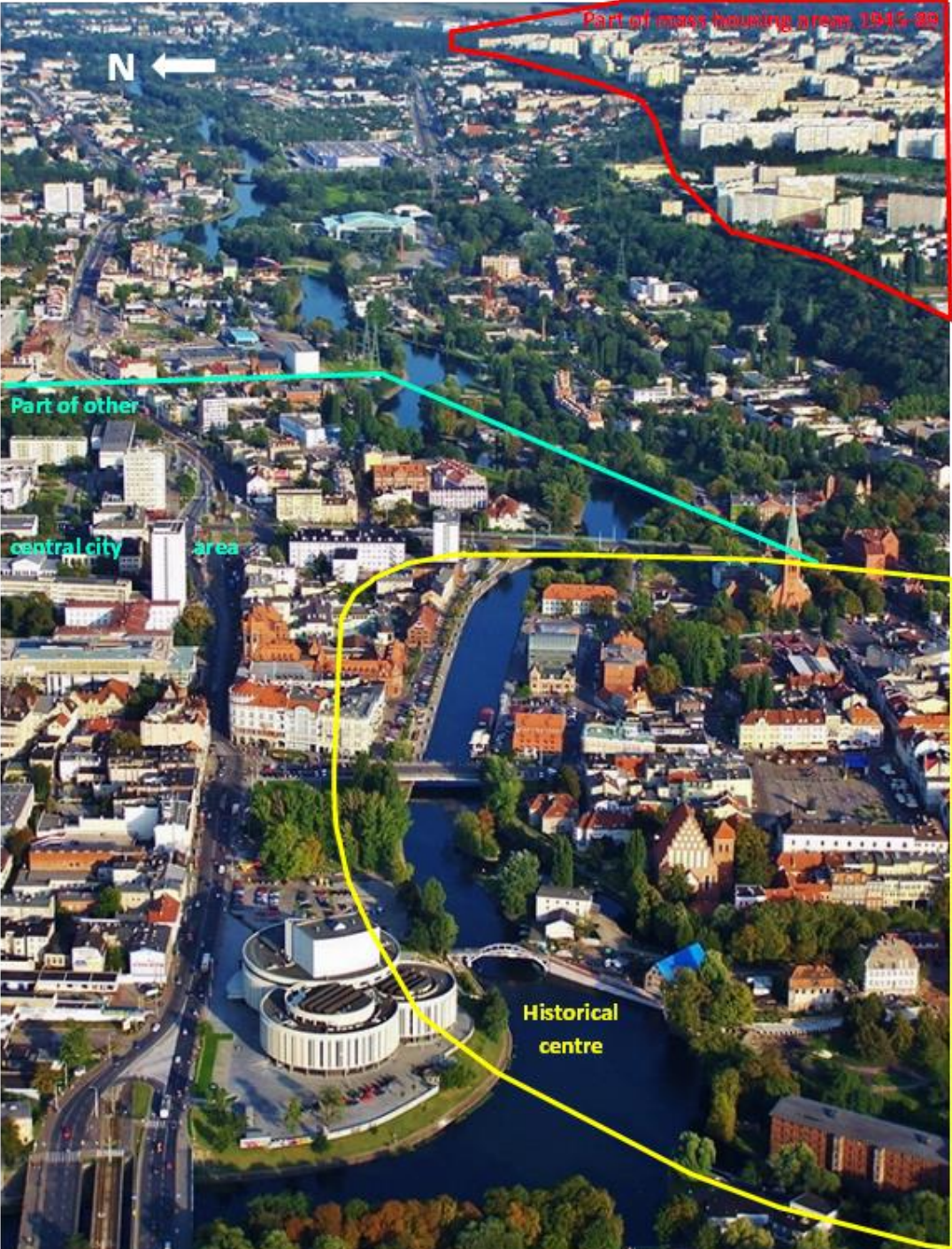
+6% = +0,5% per year

Leipzig 2015 -> 2035

583,000 -> 657,000 inhabitants

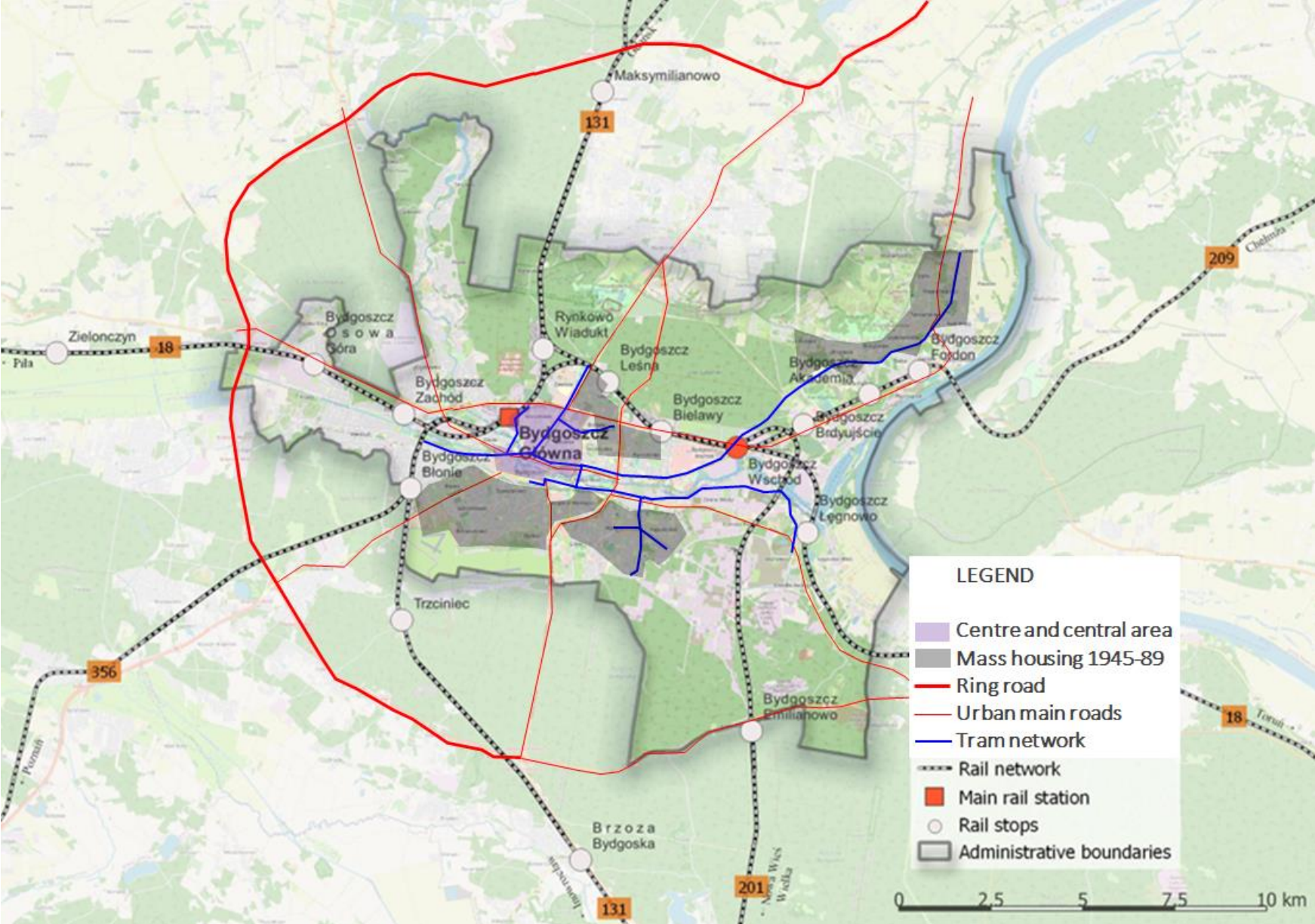
+13% = +0.6% per year

# Bydgoszcz



Jagiellońska Street

# Bydgoszcz





# Plymouth



Royal Parade, rebuilt  
Plymouth city centre, 1958



Small remainder  
historical centre,  
recreational port

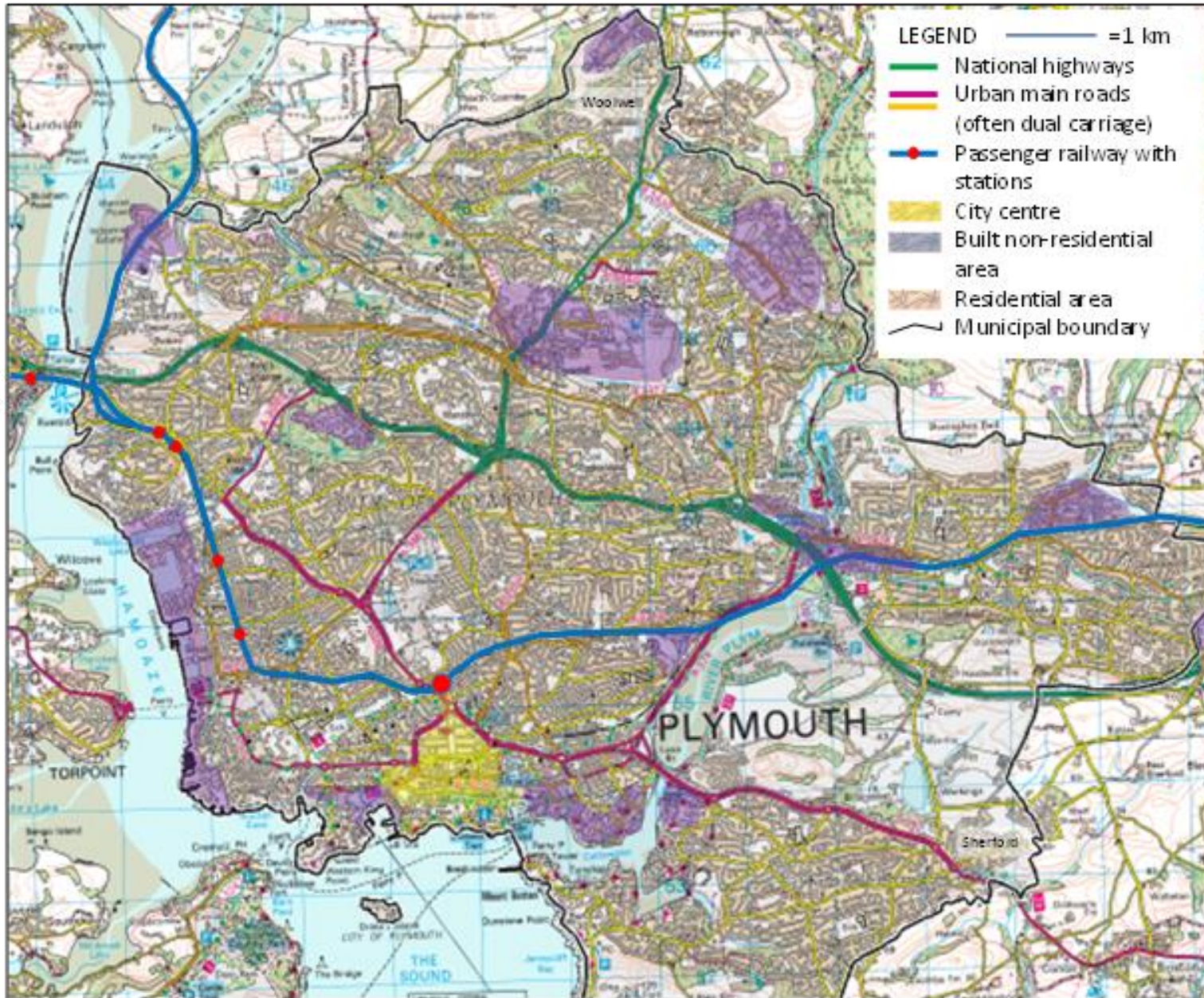


Waterfront Mill Bay



Pre-war residential  
row house  
neighbourhood

# Plymouth



# Thessaloniki



Boulevard (Egnatia Str.)  
in the city centre




Waterfront of city center



Residential area  
outside of the centre

# Thessaloniki

An aerial photograph of Thessaloniki, Greece, showing a dense urban grid. A thick yellow line outlines a large, irregular area of the city. A red location pin is placed in the upper-left quadrant of the outlined area, with the word 'Thessaloniki' written below it. The city is situated on a peninsula, with a dark blue body of water to the south and west. The surrounding land is mostly built-up with buildings and roads.

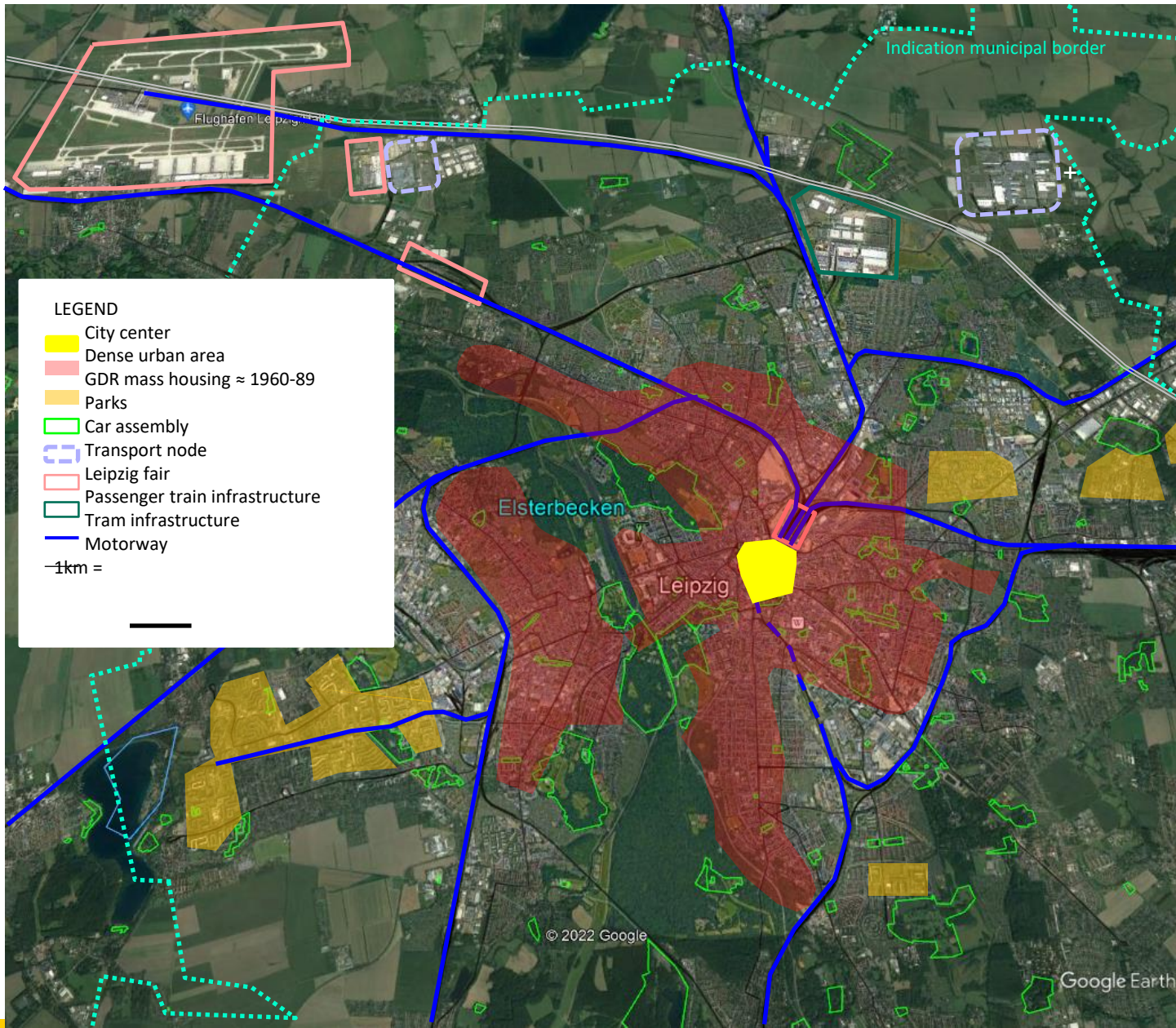
Thessaloniki

Some areas with 20,000  
residents per km<sup>2</sup>

# Leipzig



# Leipzig





**2050**  
**CliMobCity**  
Interreg Europe



European Union  
European Regional  
Development Fund

**Thank you!**